



# Pacific Tsunami Warning Center

[Home](#)   [News](#)   [Organization](#)   Search for:   [NWS](#)   [All NOAA](#)

Local forecast by  
"City, St" or Zip Code

[DOC](#) > [NOAA](#) > [NWS](#) > [PTWC](#)

Click on the tabs below to see tsunami messages relevant to each of PTWC's [areas of responsibility](#).

[All Regions](#)   [Pacific Ocean](#)   [Hawai'i](#)   [Caribbean Sea](#)   [Indian Ocean \(discontinued\)](#)

## Message hawaii.TIBHWX.2013.07.21.0518

[XML](#) RSS Feeds



Twitter



Facebook

### Messages

- [SUBSCRIBE](#)
- [Pacific Ocean](#)
- [Hawai'i](#)
- [Caribbean Sea](#)
- [Indian Ocean](#)
- [About Messages](#)
- [Recent Messages](#)
- [WC/ATWC](#)

### Information

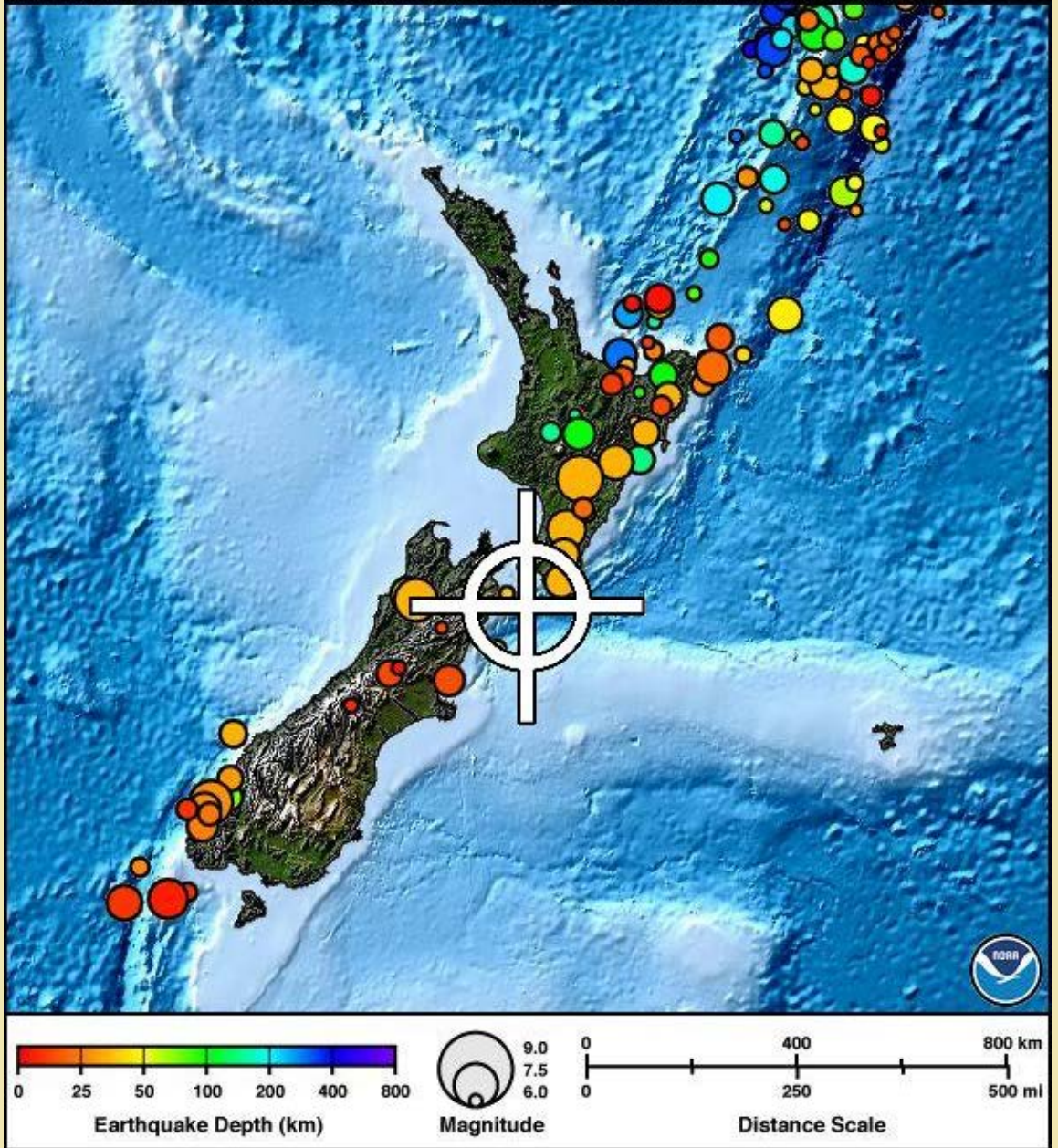
- [FAQ](#)
- [Hawai'i Residents](#)
- [Tsunami Info Ctr](#)
- [Tsunami Database](#)
- [TsunamiReady](#)


### About PTWC

- [Responsibilities](#)
- [History](#)
- [Media & Visitor Info](#)
- [Staff](#)
- [Contact Us](#)

Tsunami Information		Earthquake Information	
<b>Message Time:</b>	20 Jul 2013 07:18 pm HST	<b>Origin Time:</b>	20 Jul 2013 7:10 pm HST
<b>Message Num:</b>	1	<b>Magnitude:</b>	6.9 Mwp (reviewed by PTWC)
<b>Message Text:</b>	<a href="#">click to read</a>	<b>Latitude:</b>	42° S
<b>Message Type:</b>	Tsunami Information Statement	<b>Longitude:</b>	174.9° E
<b>Warning:</b>	none	<b>Depth:</b>	14 km (8.7 mi)
<b>Watch:</b>	none	<b>Location:</b>	Off East Coast of the South Island N.z.
<b>ETAs / Obs:</b>	none	<b>More Info.:</b>	updated earthquake information from the <a href="#">USGS</a> <a href="#">NEIC</a>

20 Jul 2013 7:10 pm HST, Mag 6.9, Lat: 42 S, Lon: 174.9 E, Depth



**NOTE: PTWC earthquake parameters are only preliminary.**  
The [USGS National Earthquake Information Center \(NEIC\)](#) is the official source for earthquake information. 

[Did you feel it? Report a felt earthquake.](#)

**More Information**

- [Recent Hawai'i messages](#)
- [Hawai'i message archive](#)
- [About Hawai'i messages](#)
- [Hawai'i Tsunami Safety and Preparedness Information](#)
- [USGS Hawaiian Volcano Observatory](#)



US Dept of Commerce / NOAA / NWS  
Pacific Tsunami Warning Center  
91-270 Fort Weaver Rd  
Ewa Beach, HI 96706-2928 USA  
1-808-689-8207

[Disclaimer](#)  
[Credits](#)  
[Glossary](#)

[Privacy Policy](#)  
[About Us](#)  
[Career Opportunities](#)



000  
WEHW42 PHEB 210518  
TIBHWX  
HIZ001>003-005>009-012>014-016>021-023>026-210718-

TSUNAMI INFORMATION STATEMENT NUMBER 1  
NWS PACIFIC TSUNAMI WARNING CENTER EWA BEACH HI  
718 PM HST SAT JUL 20 2013

TO - CIVIL DEFENSE IN THE STATE OF HAWAII

SUBJECT - TSUNAMI INFORMATION STATEMENT

THIS STATEMENT IS FOR INFORMATION ONLY. NO ACTION REQUIRED.

AN EARTHQUAKE HAS OCCURRED WITH THESE PRELIMINARY PARAMETERS

ORIGIN TIME - 0710 PM HST 20 JUL 2013  
COORDINATES - 42.0 SOUTH 174.9 EAST  
LOCATION - OFF EAST COAST OF THE SOUTH ISLAND N.Z.  
MAGNITUDE - 6.9 MOMENT

EVALUATION

BASED ON ALL AVAILABLE DATA A DESTRUCTIVE PACIFIC-WIDE TSUNAMI IS NOT EXPECTED AND THERE IS NO TSUNAMI THREAT TO HAWAII. REPEAT. A DESTRUCTIVE PACIFIC-WIDE TSUNAMI IS NOT EXPECTED AND THERE IS NO TSUNAMI THREAT TO HAWAII.

THIS WILL BE THE ONLY STATEMENT ISSUED FOR THIS EVENT UNLESS ADDITIONAL DATA ARE RECEIVED.

\$\$